

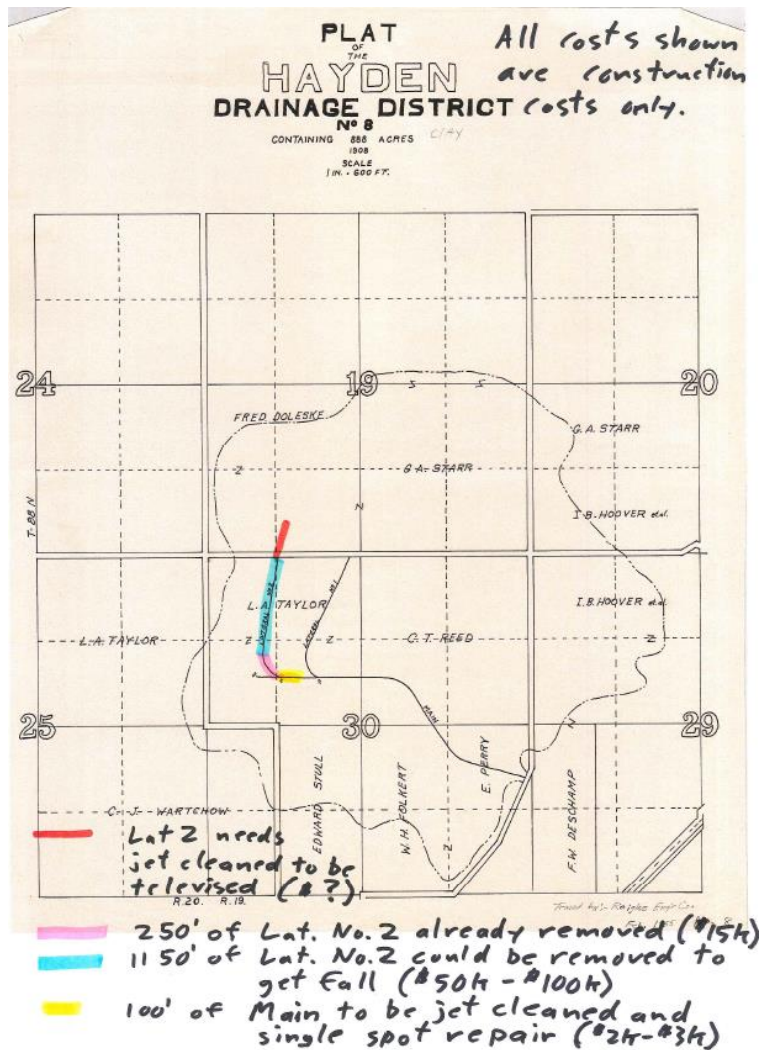
**MINUTES
DD 8 AND DD 122
LANDOWNER MEETING**

**AUGUST 31, 2016 – 2:00 A.M.
HARDIN COUNTY COURTHOUSE**

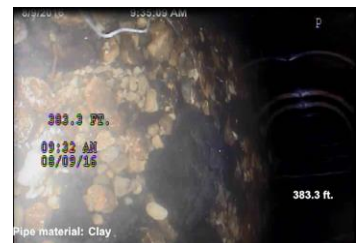
Hardin County Board of Supervisor Chairman, Lance Granzow, opened the meeting. Also present were Supervisors, Ronn Rickels and Renee McClellan; Landowners, Jack and Karol Rogers, Gordon Taylor, Laverne Gast, Marvin Kramer and Lara Kramer; Lee Gallentine with Ryken Engineering; Drainage Clerk, Tina Schlemme.

Rickels moved, McClellan seconded to approve the agenda as presented. All ayes. Motion carried.

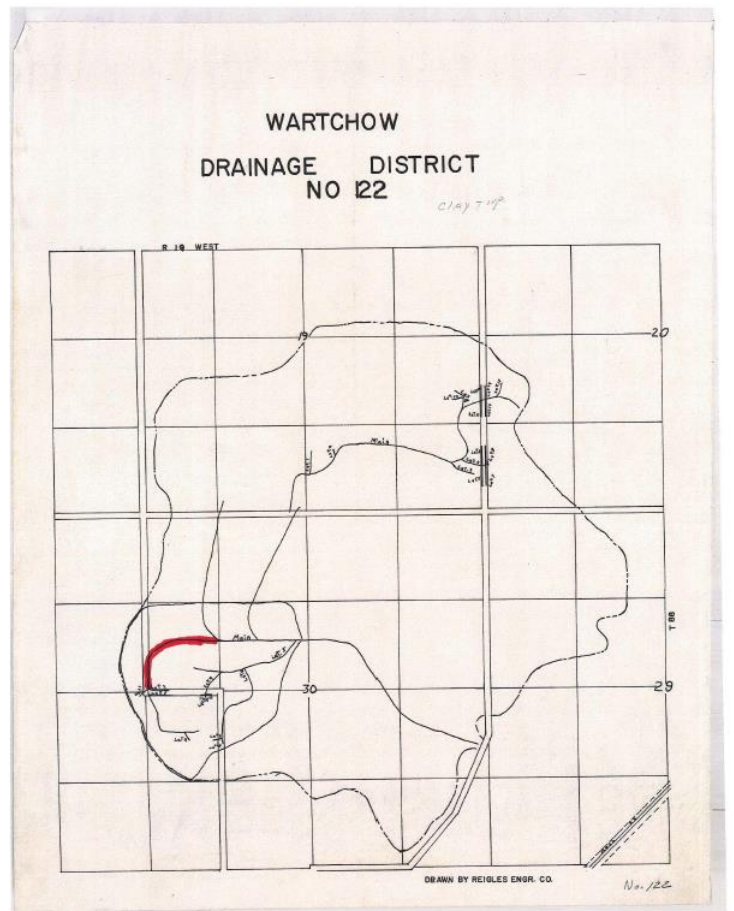
After introductions, the meeting was then turned over to Gallentine who explained the repairs for DD 8, which began when a landowner reported drainage concerns in Section 30 of Clay Township. The Trustees ordered televising to be completed, which could not be performed due to broken tile and debris. The Trustees then directed Ryken Engineering to remove as much needed of Lateral 2 tile until conditions allowed for televising. Approximately 250' of tile was removed and televising performed upstream and downstream. Gallentine explained in the amount they televised to the south that there were several humps and bumps in the tile with deposited mud and debris in the low points with only 2" of fall between the start and end. He presented options of replacing the 250' that is already removed at an estimated cost of \$15,000. Another option would be to replace an additional 1,150' to gain 2½ feet of fall at an estimate of \$50,000-\$100,000. It was also explained that a short 100' piece of the main tile needs jet cleaned with a single spot repair at an estimated cost of \$2,000-\$3,000.



Gallentine then presented televising photos which indicated the main tile looked pretty good except for the needed spot repair. Other pictures of Lateral 2 showed in the 12-14" tile that there was 3-4" of rock. He further explained that the depth of the tile is approximately 1½" to the top of the pipe, therefore he would recommend concrete pipe, not plastic.



Gallentine then began to explain the investigation results for DD 122. While televising from DD 8 and entering into the DD 122 tile, they could only go 14' due to mud and debris in the 12" tile. He stated the water is slowly flowing but would need jet cleaned to be televised. It was discussed that they could possibly televise east and south from the intake in the road ditch and then try accessing every 300' to confirm silt levels.



— Main needs jet cleaned to be televised (#?)

McClellan moved, Rickels seconded to perform the one spot repair on DD 8 main tile. All ayes. Motion carried.

Rickels moved, McClellan seconded for Ryken Engineering to create an abbreviated Engineer's Report for DD 8 to show estimated costs of replacing 1400' of lateral 2 tile to gain the extra fall. If the report indicates the estimate over \$50,000, then a public hearing will result. The abbreviated report will not include the district history to help reduce costs. All ayes. Motion carried.

Rickels moved, McClellan seconded for Ryken Engineering to direct televising be performed from the road ditch to the south and east. If the tile is plugged at the end (to the south), then it can be assumed the whole length is plugged. Gallentine is to bring the results back to the Trustees. All ayes. Motion carried.

McClellan moved, Rickels seconded to adjourn the meeting. All ayes. Motion carried.